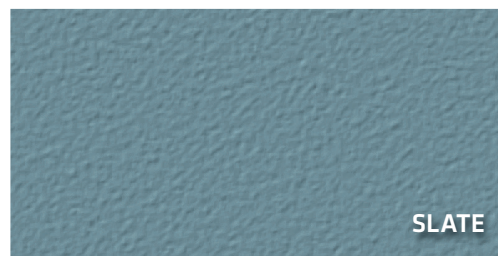
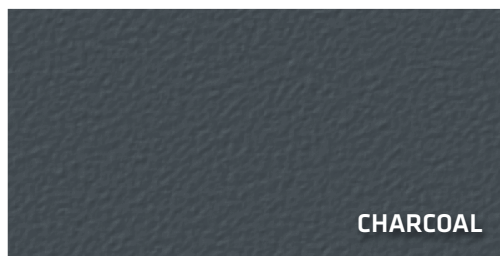
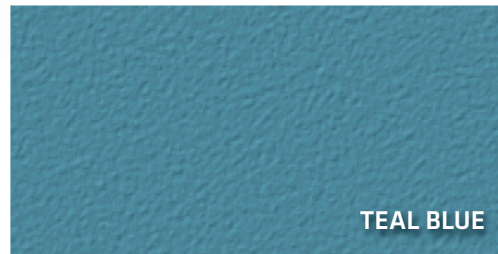
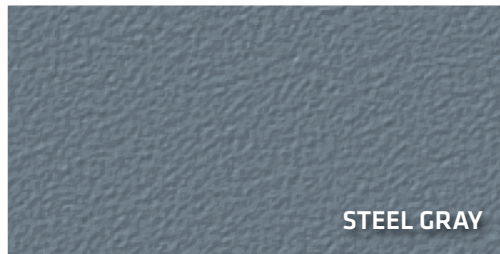
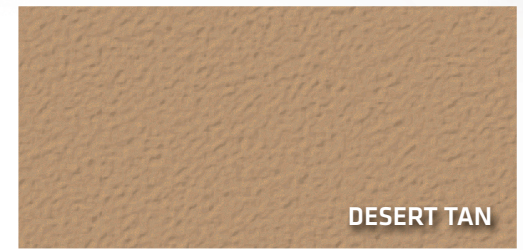
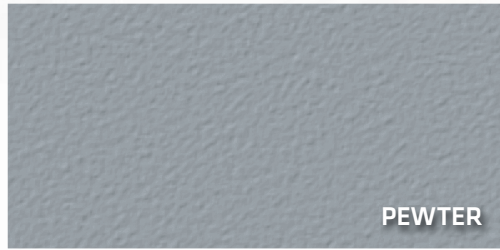
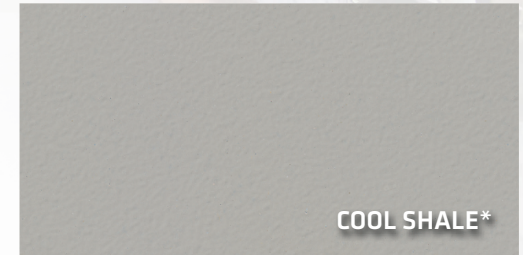
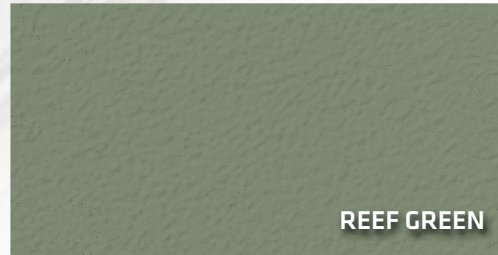
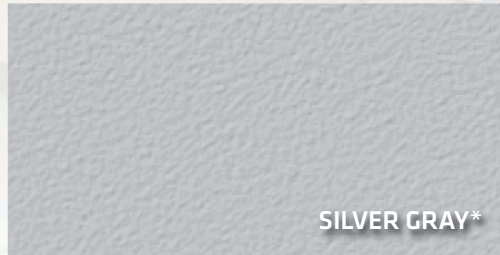


# STONCLAD

Serious protection for heavy duty environments. Stonclad provides extraordinary performance under the most demanding conditions. Chemical, abrasion and impact resistant systems assure durability and longevity. Specialized configurations meet the needs of static control and temperature dependent environments. Diversity and performance for the most rigorous industrial applications along with smart design, custom colours and logos.



\* Silver Gray and Cool Shale colours require two coats of Stonkote. Silver Gray and Cool Shale are not available in the Stonclad UT system. All samples shown are coated. Stonhard coatings include high solids and solvent based epoxies and urethanes. All coatings are available in the colours shown here in addition to Clear, Black and Safety Yellow. Urethane coatings are also available in White. Colour matching available with additional lead time, minimum order requirements and a slight premium. Colour reproductions are as accurate as modern photography and quality printing methods can produce.

For actual colour please request a sample at [www.stonhard.com](http://www.stonhard.com).  
© 2026 Stonhard

